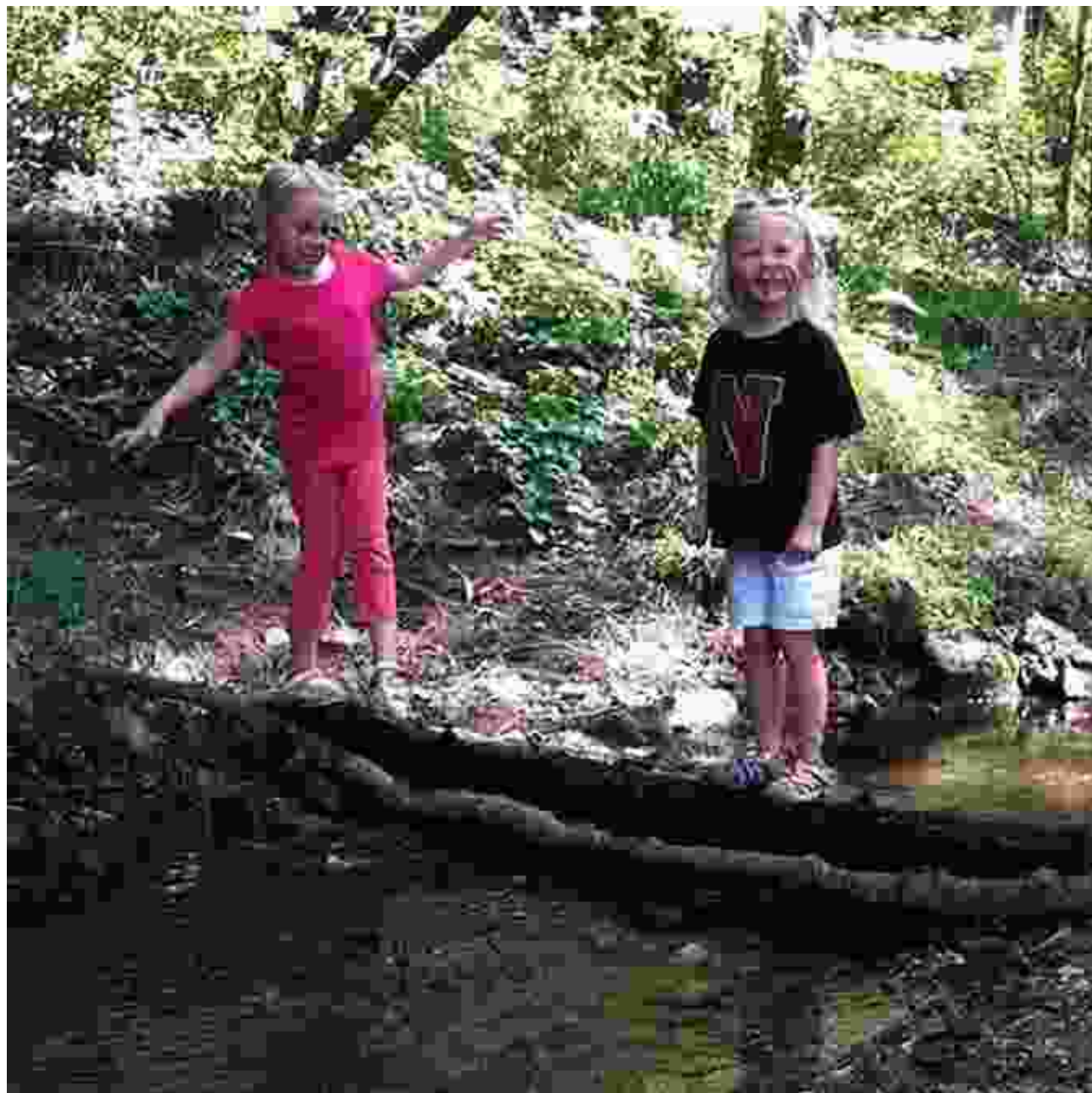


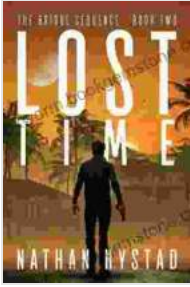
Lost Time: The Bridge Sequence Two – An Existential Exploration of Illusion and Free Will



Lost Time (The Bridge Sequence Book Two)

by Nathan Hystad

★★★★☆ 4.4 out of 5



Language	: English
File size	: 3422 KB
Text-to-Speech	: Enabled
Screen Reader	: Supported
Enhanced typesetting	: Enabled
Word Wise	: Enabled
Print length	: 350 pages
Lending	: Enabled
X-Ray	: Enabled



In the critically acclaimed television series "Lost," the bridge sequence in season 2 stands as a poignant and thought-provoking episode that delves into the depths of existentialism, free will, and the illusion of control. Set in the uncharted wilderness of a mysterious island, the episode confronts the characters with a series of challenges that force them to confront their own mortality and the fragility of their existence.

Existential Themes

The bridge sequence masterfully explores the existential themes of free will and determinism. As the survivors attempt to cross the rickety bamboo bridge, they are met with obstacles and dangers that seem to question the very nature of their choices. The collapse of the bridge, in particular, serves as a powerful metaphor for the randomness and unpredictability of life.



The collapse of the bridge symbolizes the fragility of life and the illusion of control.

The characters are forced to confront the idea that their lives may be subject to forces beyond their comprehension. They must grapple with the fear that their actions are predetermined or that they are simply pawns in a larger cosmic game. This existential crisis is reflected in the dialogue and actions of the survivors, as they wrestle with doubts and uncertainties about their fate.

Character Analysis

The bridge sequence two offers a nuanced exploration of the characters and their complex relationships. Jack, the leader of the survivors, struggles with the weight of responsibility and the realization that his decisions have far-reaching consequences. Kate grapples with her past and her desire for

redemption, while Sawyer confronts his own cynicism and self-destructive tendencies.



As the survivors navigate the treacherous bridge, their interactions reveal their hopes, fears, and vulnerabilities. They support and challenge each other, forming bonds that are tested by the adversity they face. The bridge

sequence becomes a crucible that forges their identities and shapes their relationships.

Cinematography

The cinematography of the bridge sequence two deserves special mention. Director Jack Bender uses a combination of long takes, close-ups, and aerial shots to create a sense of suspense and urgency. The camera follows the survivors as they make their way across the bridge,捕捉 their expressions and capturing the danger of their situation.



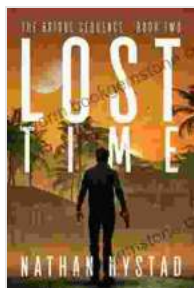
The cinematography captures the danger and suspense of the bridge crossing.

The use of natural lighting and sound creates an immersive experience, drawing the viewer into the characters' journey. The crashing waves and

the sound of the wind add to the feeling of isolation and vulnerability, reinforcing the existential themes of the episode.

"Lost" season 2's bridge sequence two stands as a testament to the power of television to explore existential themes and challenge our assumptions about free will and control. Through its masterful storytelling, character development, and stunning cinematography, the episode provokes us to confront our own mortality and the choices we make in the face of uncertainty.

The bridge sequence two remains a haunting and unforgettable experience that continues to resonate with viewers long after the credits roll. It is a testament to the enduring power of "Lost" and its ability to delve into the depths of the human condition.



Lost Time (The Bridge Sequence Book Two)

by Nathan Hystad

★★★★☆ 4.4 out of 5

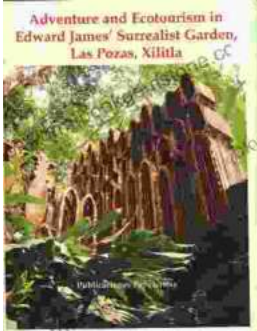
Language : English
File size : 3422 KB
Text-to-Speech : Enabled
Screen Reader : Supported
Enhanced typesetting : Enabled
Word Wise : Enabled
Print length : 350 pages
Lending : Enabled
X-Ray : Enabled





We Were 12 At 12:12 On 12/12/12: Adventure Travel Tales

On December 12, 2012, at exactly 12:12 pm, a group of 12 individuals embarked on a unique travel journey. They had planned this trip for months, and they were...



Unveiling Adventure and Ecotourism in Edward James' Surrealist Garden: Las Pozas Xilitla

Nestled amidst the lush greenery of the Huasteca Potosina region in Mexico, Las Pozas Xilitla is an otherworldly paradise that harmoniously blends art,...