

The Restless Years 1922-1968: The Transformative Early Years of Lucian Freud



The Lives of Lucian Freud: The Restless Years: 1922-

1968 by William Feaver

★★★★★ 4.7 out of 5

Language : English



File size	: 93788 KB
Text-to-Speech	: Enabled
Enhanced typesetting	: Enabled
X-Ray	: Enabled
Word Wise	: Enabled
Print length	: 682 pages
Screen Reader	: Supported



Lucian Freud, born in Berlin in 1922, was a towering figure in the art world, renowned for his unflinching and often unsettling portraits.

Before achieving international acclaim, Freud's early years were marked by personal turmoil, artistic experimentation, and relentless introspection. The period from 1922 to 1968, known as "The Restless Years," proved pivotal in shaping his artistic identity.

Early Influences and Bohemian Beginnings

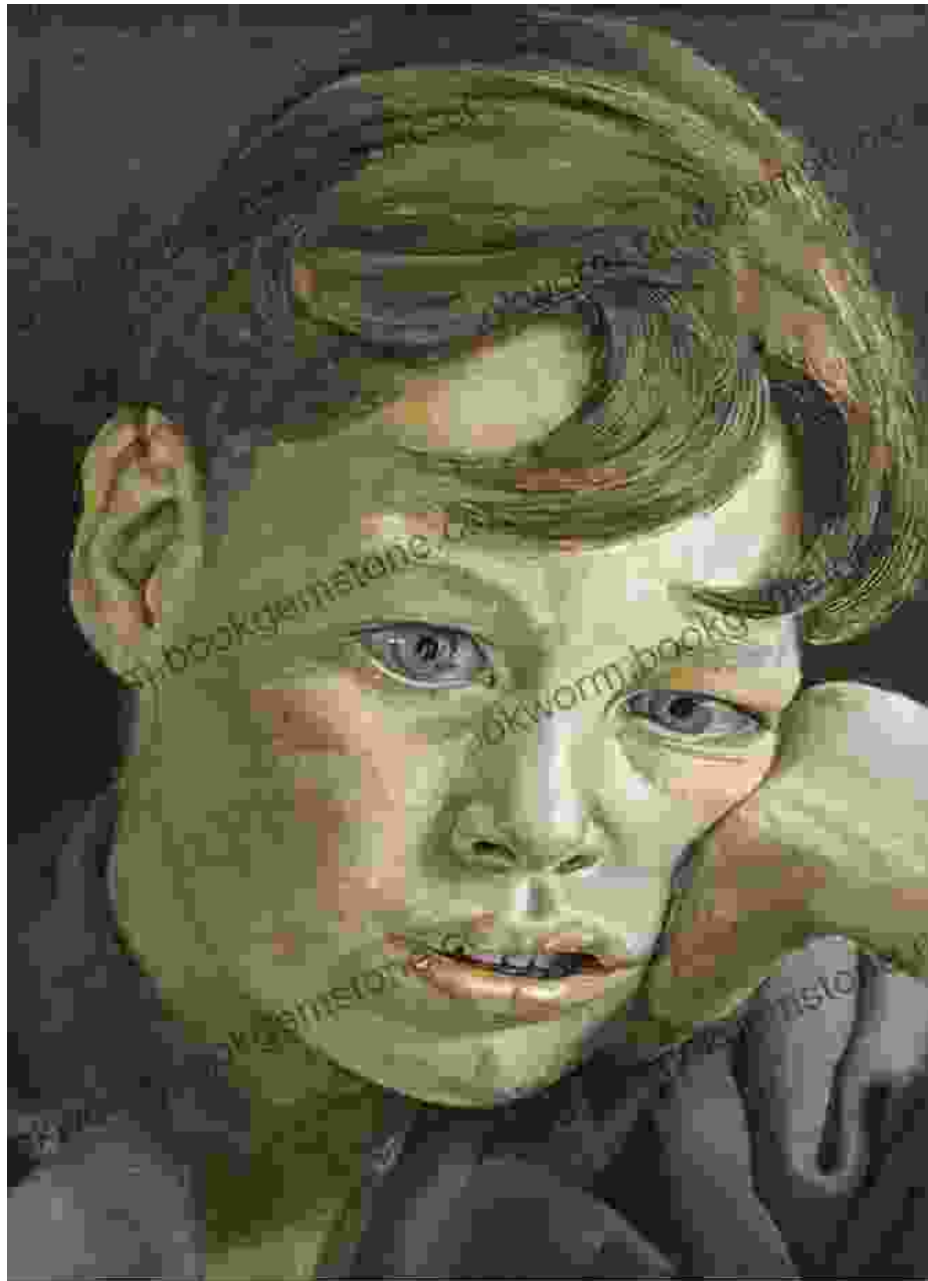
Freud's upbringing was far from ordinary. His father, Ernst Ludwig Freud, was a distinguished architect and the son of Sigmund Freud, the founder of psychoanalysis. His mother, Lucie Brasch, was a photographer and the granddaughter of a wealthy merchant. Freud grew up in a world of intellectual curiosity and artistic stimulation, surrounded by avant-garde artists and intellectuals.



In his formative years, Freud was drawn to the bohemian lifestyle, immersing himself in the art world's fringes. He left home at the young age of 18 to study at the East Anglian School of Painting and Drawing in Dedham, England. There, he encountered the works of Francis Bacon, a significant influence on his artistic trajectory.

Early Artistic Explorations

Freud's early paintings were characterized by a raw and expressionist style, influenced by German Expressionism and Post-Impressionism. His subjects often comprised landscapes, portraits, and still lifes, imbued with a sense of intimacy and emotional intensity.



During this period, Freud experimented with various techniques and materials, including oil paint, watercolor, and pastels. He developed a unique approach to figuration, depicting his subjects with a ruthless honesty and attention to detail.

Post-War Period and New Directions

The post-war years brought both personal and artistic struggles for Freud. He struggled with depression and anxiety, which often manifested in his turbulent relationships and excessive alcohol consumption. Despite these challenges, his artistic vision continued to evolve.



Freud gradually moved away from expressionism towards a more realistic and detailed approach. His subjects became increasingly introspective, with a focus on psychological states and the complexities of human relationships. This shift in style laid the foundation for his later masterpieces.

The Restless Years of Lucian Freud were a period of intense artistic growth and personal transformation. From his bohemian beginnings to his

groundbreaking artistic innovations, these early experiences shaped the visionary painter he would become.

Through his unwavering dedication to figuration and his unflinching portrayal of the human condition, Lucian Freud left a lasting legacy in the art world. His restless spirit and relentless search for truth continue to inspire and challenge artists and audiences alike.



The Lives of Lucian Freud: The Restless Years: 1922-1968 by William Feaver

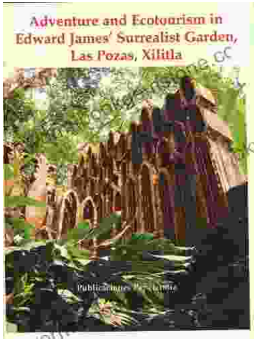
★★★★☆ 4.7 out of 5

Language : English
File size : 93788 KB
Text-to-Speech : Enabled
Enhanced typesetting : Enabled
X-Ray : Enabled
Word Wise : Enabled
Print length : 682 pages
Screen Reader : Supported



We Were 12 At 12:12 On 12/12/12: Adventure Travel Tales

On December 12, 2012, at exactly 12:12 pm, a group of 12 individuals embarked on a unique travel journey. They had planned this trip for months, and they were...



Unveiling Adventure and Ecotourism in Edward James' Surrealist Garden: Las Pozas Xilitla

Nestled amidst the lush greenery of the Huasteca Potosina region in Mexico, Las Pozas Xilitla is an otherworldly paradise that harmoniously blends art,...